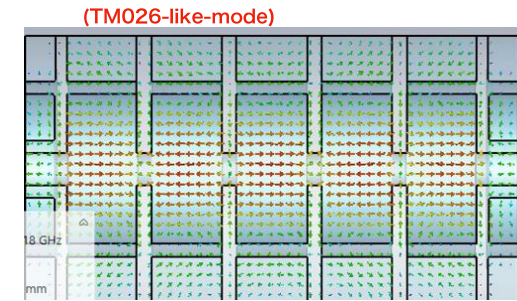
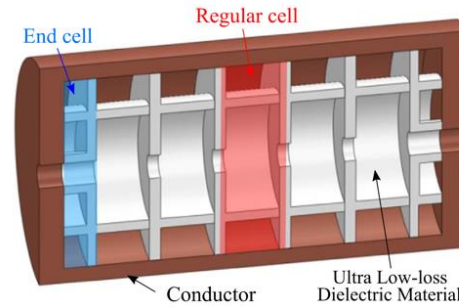


Shingo Mori, PhD

KEK, Japan

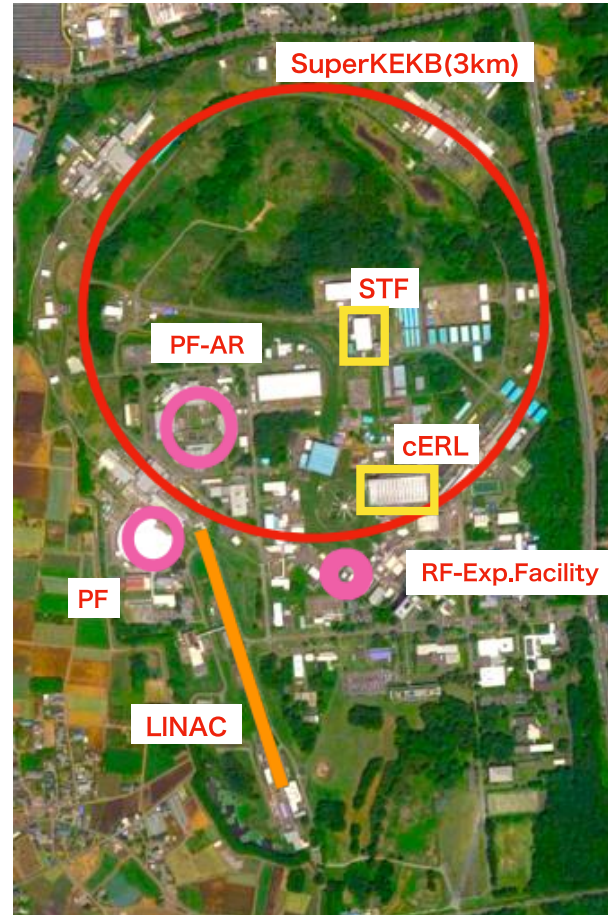
◆Current Project:
Dielectric Assisted Accelerating cavity



◆Sports



◆Map



$$Q \sim \mathcal{O}(10^5) @ RT$$

◆Background (in PhD course)

$$\begin{cases} \tau \rightarrow \mu X, & h \rightarrow \tau \bar{\tau} \\ \text{QCD instanton} \end{cases}$$

◆Cherry Blossoms (from April)

