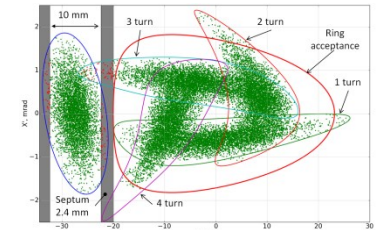
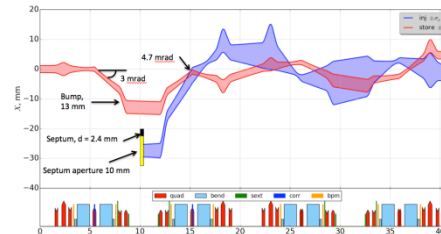


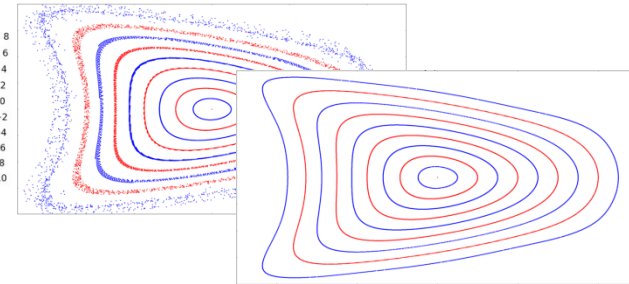
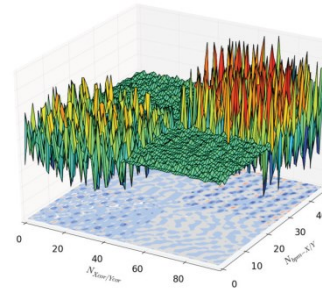
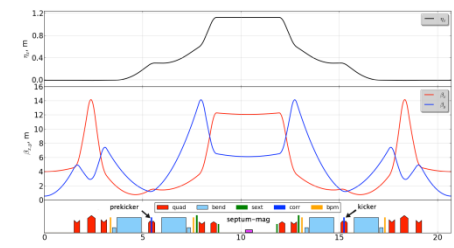
1 slide/1 minute: Sergey Tomlin



- Student at BINP (Novosibirsk):
 - injection/extraction systems



- PhD student at Kurchatov Light Source (Moscow):
 - Beam optics & dynamics
 - Close orbit correction
 - Insertion devices influence
 - Spontaneous radiation



- Currently Postdoc at The European XFEL (Hamburg):
 - FEL calculations
 - S2E simulation including collective effects

